

ORtera Summary Report for 2005-09-13 16:00 Default partition for /d3 (BEFORE)

Monitored on 9/13/05 5:00 PM

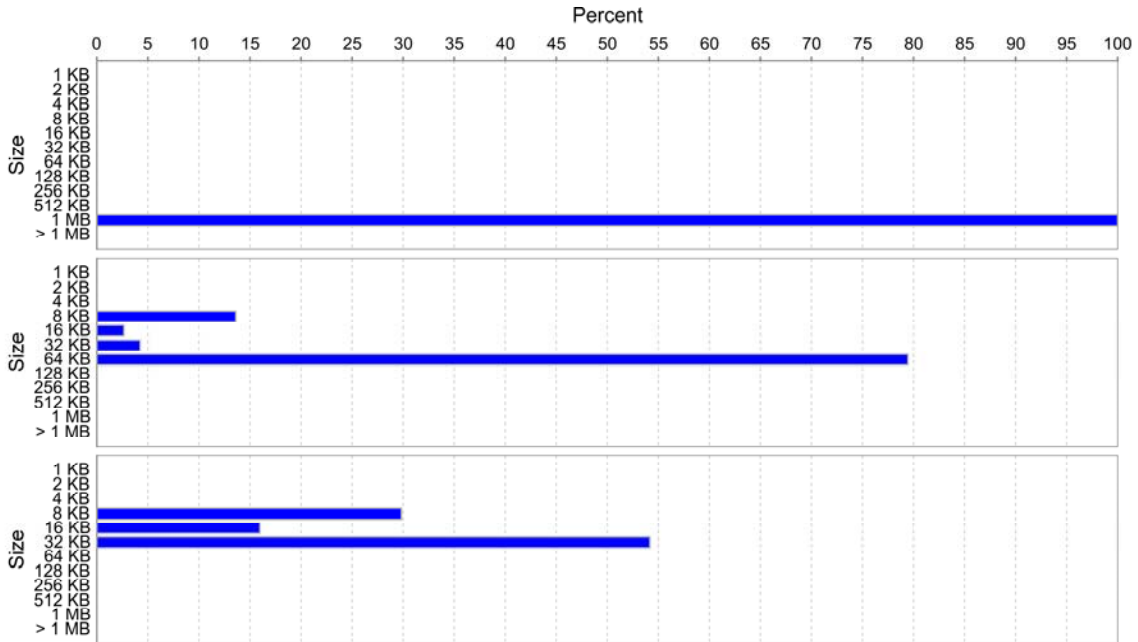
Data for category 1 (/d3 for '2005-09-13 16:00 Default partition for /d3 (BEFORE)') is shown in this order:

/d3 for '2005-09-13 16:00 Default partition for /d3 (BEFORE)'

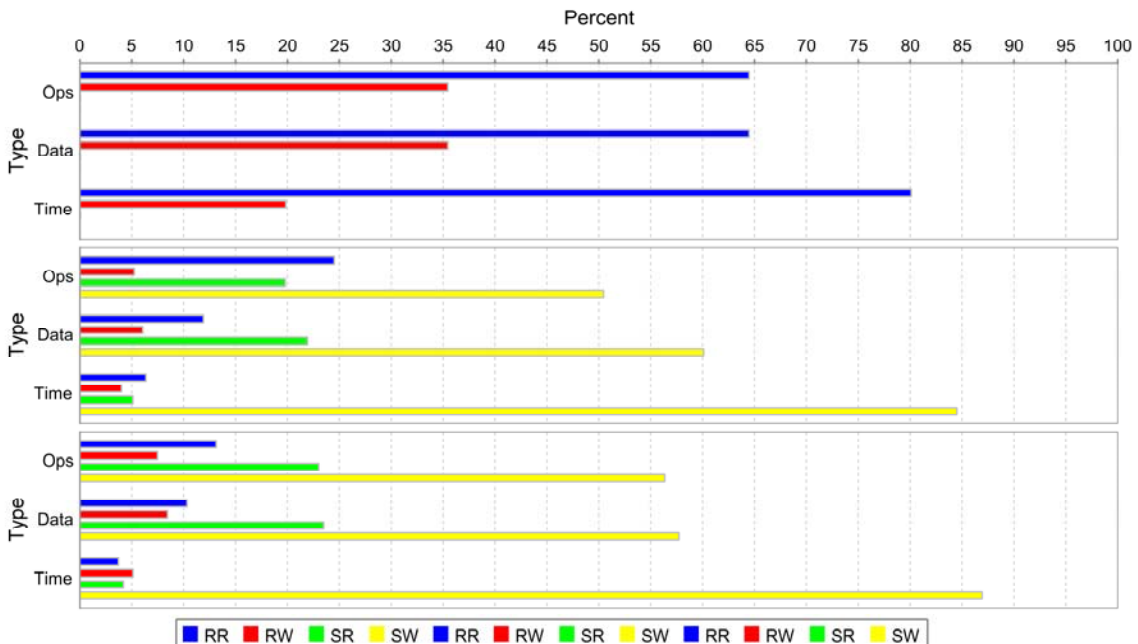
Logical Devices used by /d3 for '2005-09-13 16:00 Default partition for /d3 (BEFORE)'

Physical Devices used by Logical Devices used by /d3 for '2005-09-13 16:00 Default partition for ...'

I/O Size Distribution



I/O Type Composition



Name: /d3 for '2005-09-13 16:00 Default partition for /d3 (BEFORE)'

Analysis summary:

| | | | | |
|---------------------|-----------------|-----------------|--------------|-------------|
| Last Monitored: | 9/13/05 5:00 PM | | | |
| Capability Busy: | 27% | | | |
| Load Level: | 1 (min), | 1 (max), | 1 (avg), | 0 (stdd) |
| I/O Size (KB): | 1,024 (min), | 1,024 (max), | 1,024 (avg), | 0 (stdd) |
| I/O Per Second: | 1 (min), | 8 (max), | 7.9 (avg), | 0.3 (stdd) |
| Bandwidth (MB/sec): | 7.91 (min), | 7.91 (max), | 7.89 (avg), | 0.34 (stdd) |
| Response time (ms): | 6.39 (min), | 8,668.17 (max), | 38.08 (avg), | 61.9 (stdd) |
| I/O Ops: | 64% (RR), | 0% (SR), | 35% (RW), | 0% (SW) |
| I/O Data: | 64% (RR), | 0% (SR), | 35% (RW), | 0% (SW) |
| I/O Time: | 80% (RR), | 0% (SR), | 20% (RW), | 0% (SW) |

Name: Logical Devices used by /d3 for '2005-09-13 16:00 Default partition for /d3 (BEFORE)'

Analysis summary:

| | | | | |
|---------------------|-----------------|---------------|---------------|---------------|
| Last Monitored: | 9/13/05 5:00 PM | | | |
| Capability Busy: | 47% | | | |
| Load Level: | 1 (min), | 47 (max), | 5.1 (avg), | 4.4 (stdd) |
| I/O Size (KB): | 0.5 (min), | 64 (max), | 52.763 (avg), | 20.852 (stdd) |
| I/O Per Second: | 1 (min), | 221 (max), | 82.5 (avg), | 33.9 (stdd) |
| Bandwidth (MB/sec): | 0.04 (min), | 5.16 (max), | 4.23 (avg), | 3.42 (stdd) |
| Response time (ms): | 0.64 (min), | 715.81 (max), | 28.93 (avg), | 18.17 (stdd) |
| I/O Ops: | 25% (RR), | 20% (SR), | 5% (RW), | 50% (SW) |
| I/O Data: | 12% (RR), | 22% (SR), | 6% (RW), | 60% (SW) |
| I/O Time: | 6% (RR), | 5% (SR), | 4% (RW), | 85% (SW) |

Name: Physical Devices used by Logical Devices used by /d3 for '2005-09-13 16:00 Default part...

Analysis summary:

| | | | | |
|---------------------|-----------------|--------------|---------------|--------------|
| Last Monitored: | 9/13/05 5:00 PM | | | |
| Capability Busy: | 42% | | | |
| Load Level: | 1 (min), | 75 (max), | 14.4 (avg), | 13 (stdd) |
| I/O Size (KB): | 0.5 (min), | 32 (max), | 20.439 (avg), | 9.689 (stdd) |
| I/O Per Second: | 1 (min), | 414 (max), | 213.1 (avg), | 80 (stdd) |
| Bandwidth (MB/sec): | 0.1 (min), | 6.66 (max), | 4.23 (avg), | 3.6 (stdd) |
| Response time (ms): | 0.6 (min), | 668.5 (max), | 24.75 (avg), | 15.29 (stdd) |
| I/O Ops: | 13% (RR), | 23% (SR), | 7% (RW), | 56% (SW) |
| I/O Data: | 10% (RR), | 24% (SR), | 8% (RW), | 58% (SW) |
| I/O Time: | 4% (RR), | 4% (SR), | 5% (RW), | 87% (SW) |